
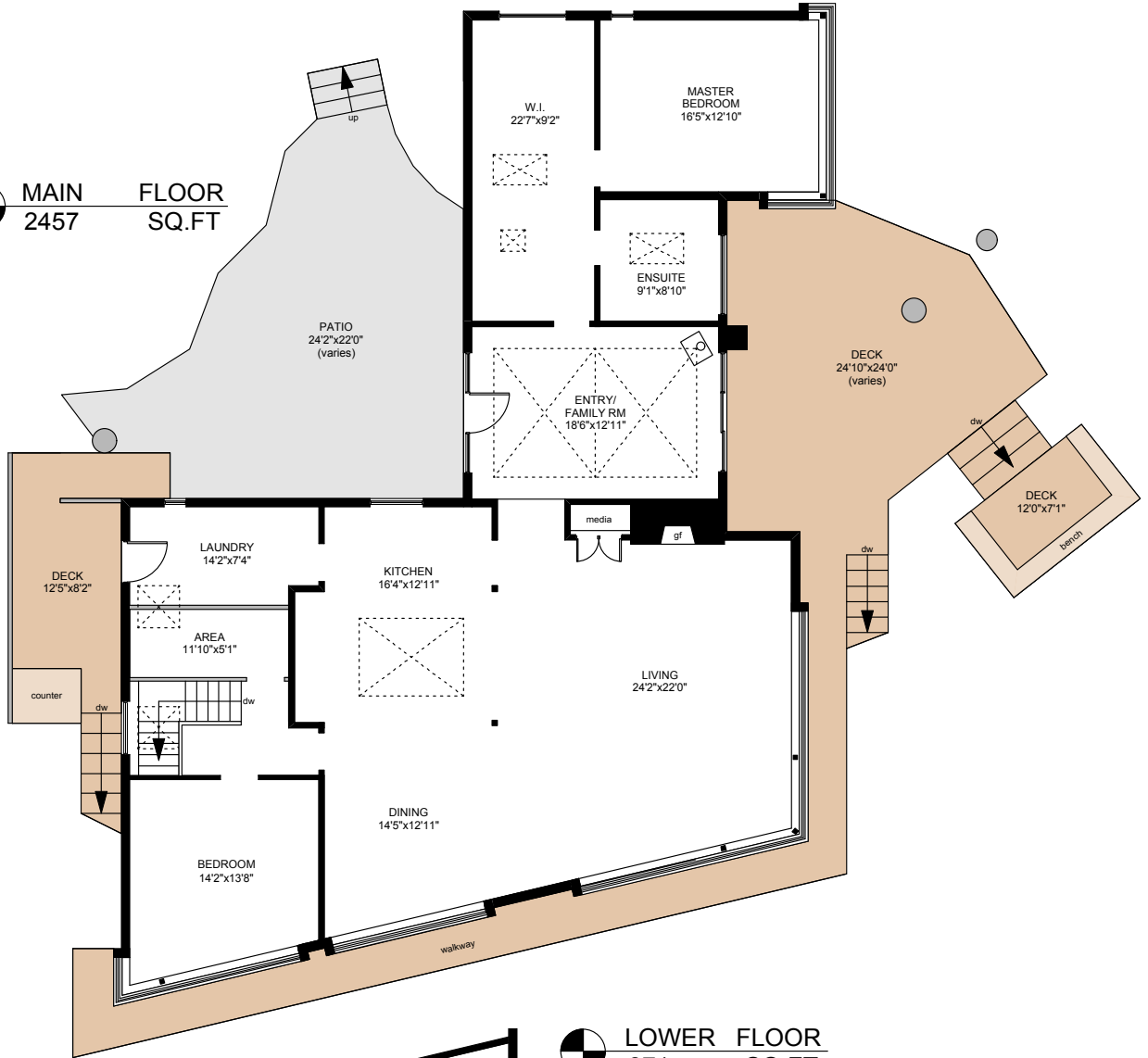

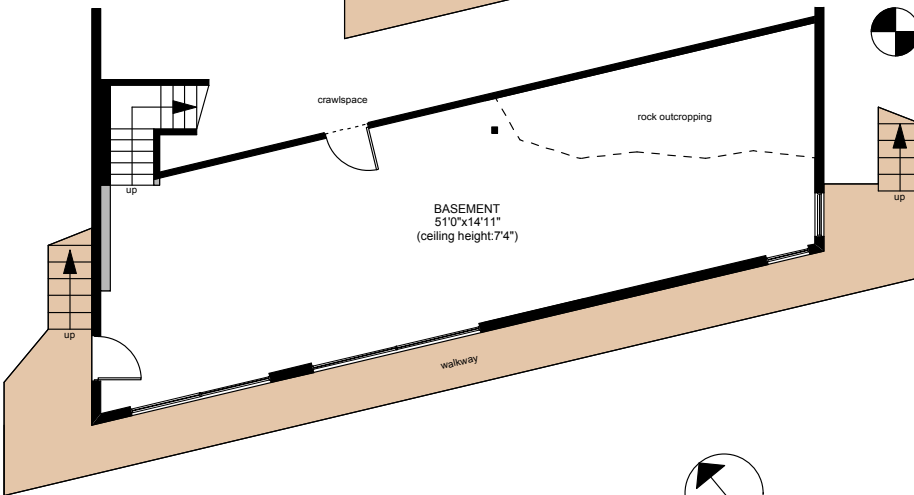


# 350 SCOTT POINT DRIVE

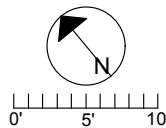

**MAIN FLOOR**  
 2457 SQ.FT




**LOWER FLOOR**  
 871 SQ.FT



	FINISHED SQ. FT.	UNFINISHED SQ. FT.	TOTAL SQ. FT.
MAIN	0	2457	2457
LOWER	0	871	871
<b>TOTAL</b>	<b>0</b>	<b>3328</b>	<b>3328</b>
GARAGE	0	247	247
CARPORT	0	478	478
DECKS	0	1313	1313
PATIO	0	556	556
MAIN	0	592	592
UPPER	0	424	424
<b>TOTAL</b>	<b>0</b>	<b>1016</b>	<b>1016</b>
DECKS	0	298	298



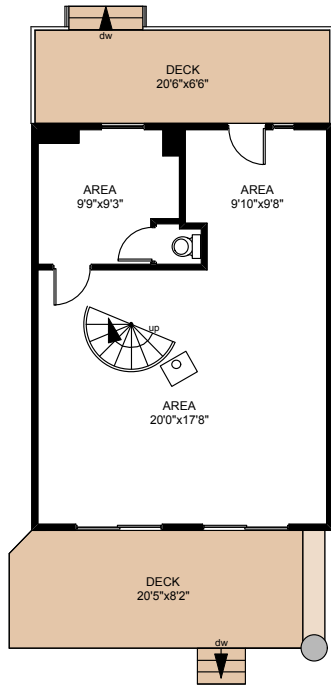
PREPARED FOR THE EXCLUSIVE USE OF  
 CHRIS & DARLENE HOBBS OF  
 SOTHEBY'S INTERNATIONAL REALTY CANADA

MEASURED ON: 01/26/12  
 DRAWING FILE: 09959

**Tafe Measure** VICTORIA, B.C.  
 Ph. 883.8894  
 www.tafemeasure.com

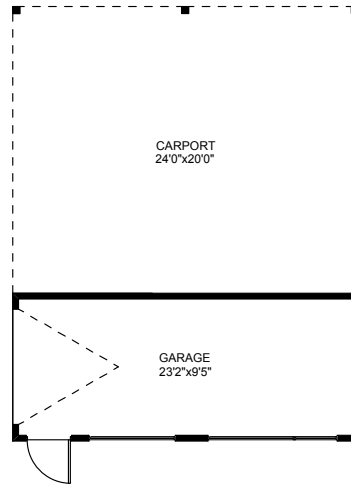
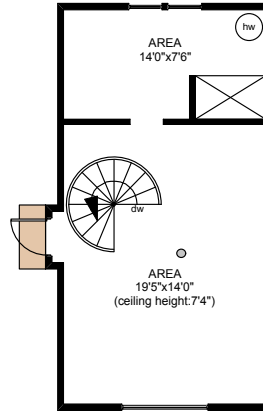
NOTE: This floor plan is provided by Chris & Darlene Hobbs of Sotheby's International Realty Canada as a convenient reference only, and is not to be relied upon as accurate. Prospective Buyers must satisfy themselves not only of the actual measurements, but also to the status of any finished space shown on this floor plan, specifically in relation to minimum ceiling height for habitable rooms required by the BC Building Code, allowable finished floor area in relation to current zoning, and determination if space was developed with necessary municipal permits.

# 350 SCOTT POINT DRIVE



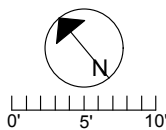
**MAIN FLOOR**  
592 SQ.FT

**UPPER FLOOR**  
424 SQ.FT



**GARAGE**  
247 SQ.FT

	FINISHED SQ. FT.	UNFINISHED SQ. FT.	TOTAL SQ. FT.
MAIN	0	2457	2457
LOWER	0	871	871
<b>TOTAL</b>	<b>0</b>	<b>3328</b>	<b>3328</b>
GARAGE	0	247	247
CARPORT	0	478	478
DECKS	0	1313	1313
PATIO	0	556	556
MAIN	0	592	592
UPPER	0	424	424
<b>TOTAL</b>	<b>0</b>	<b>1016</b>	<b>1016</b>
DECKS	0	298	298



PREPARED FOR THE EXCLUSIVE USE OF  
CHRIS & DARLENE HOBBS OF  
SOTHEBY'S INTERNATIONAL REALTY CANADA

MEASURED ON: 01/26/12  
DRAWING FILE: 09959

**Tafe Measure** VICTORIA, B.C.  
Ph. 883.8894  
www.tafemeasure.com

NOTE: This floor plan is provided by Chris & Darlene Hobbs of Sotheby's International Realty Canada as a convenient reference only, and is not to be relied upon as accurate. Prospective Buyers must satisfy themselves not only of the actual measurements, but also to the status of any finished space shown on this floor plan, specifically in relation to minimum ceiling height for habitable rooms required by the BC Building Code, allowable finished floor area in relation to current zoning, and determination if space was developed with necessary municipal permits.