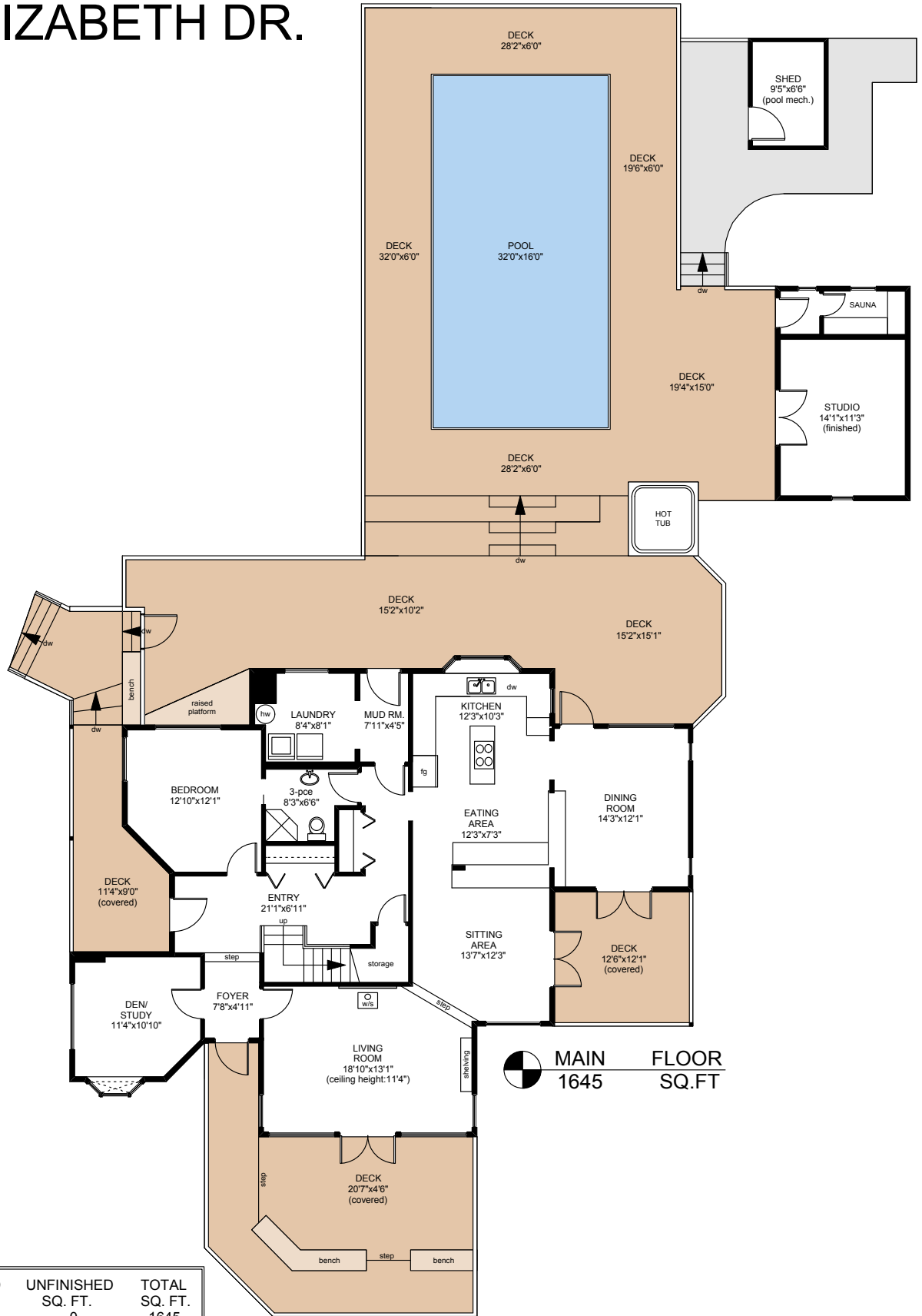
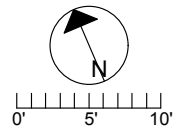


# 409 ELIZABETH DR.



**MAIN FLOOR**  
1645 SQ.FT

	FINISHED SQ. FT.	UNFINISHED SQ. FT.	TOTAL SQ. FT.
MAIN	1645	0	1645
UPPER	1338	0	1338
<b>TOTAL</b>	<b>2983</b>	<b>0</b>	<b>2983</b>
STUDIO	236	0	236
SHED	0	72	72
GARAGE	0	598	598
DECKS	0	2528	2528
G-HOUSE	0	121	121

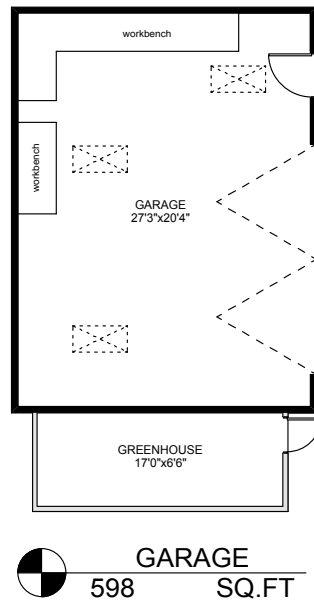
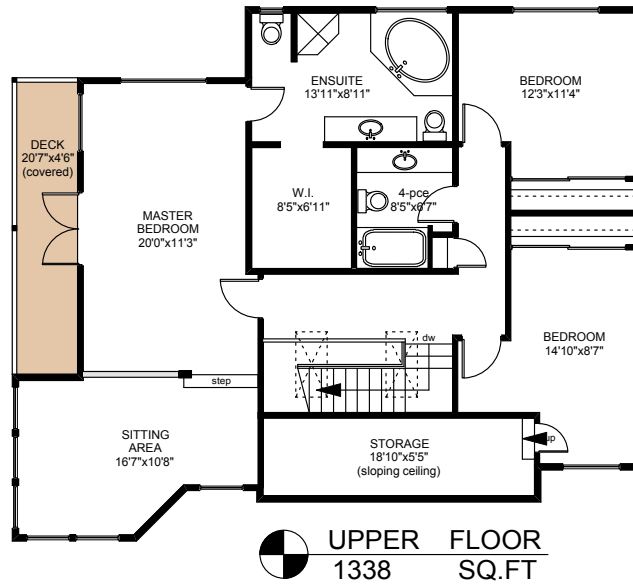


PREPARED FOR THE EXCLUSIVE USE OF  
CHRIS & DARLENE HOBBS OF  
SOTHEBY'S INTERNATIONAL REALTY CANADA

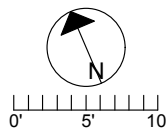
MEASURED ON: 01/05/12  
DRAWING FILE: 09911

**Tafe Measure** VICTORIA, B.C.  
Ph. 883.8894  
www.tafemeasure.com

# 409 ELIZABETH DR.



	FINISHED SQ. FT.	UNFINISHED SQ. FT.	TOTAL SQ. FT.
MAIN	1645	0	1645
UPPER	1338	0	1338
<b>TOTAL</b>	<b>2983</b>	<b>0</b>	<b>2983</b>
STUDIO	236	0	236
SHED	0	72	72
GARAGE	0	598	598
DECKS	0	2528	2528
G-HOUSE	0	121	121



PREPARED FOR THE EXCLUSIVE USE OF  
CHRIS & DARLENE HOBBS OF  
SOTHEBY'S INTERNATIONAL REALTY CANADA

MEASURED ON: 01/05/12  
DRAWING FILE: 09911

**Tafe Measure** VICTORIA, B.C.  
Ph. 883.8894  
www.tafemeasure.com