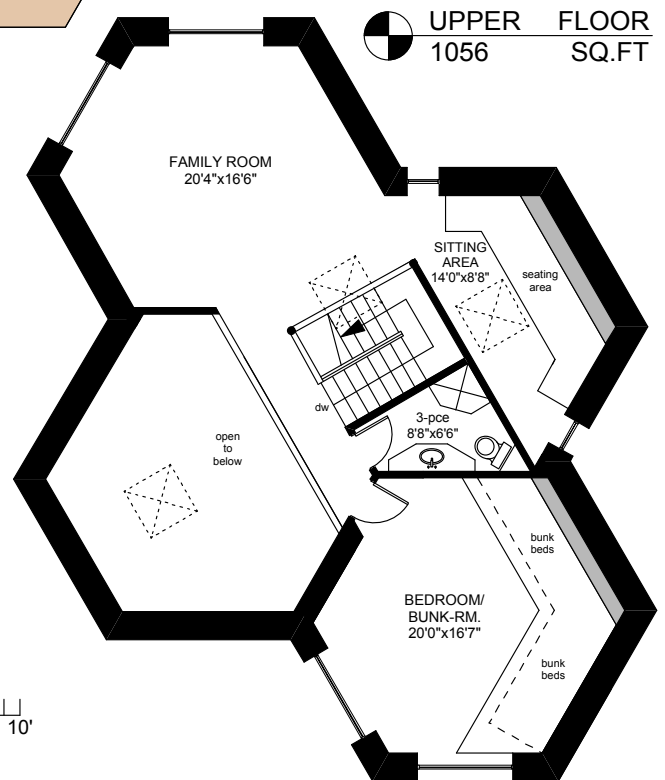
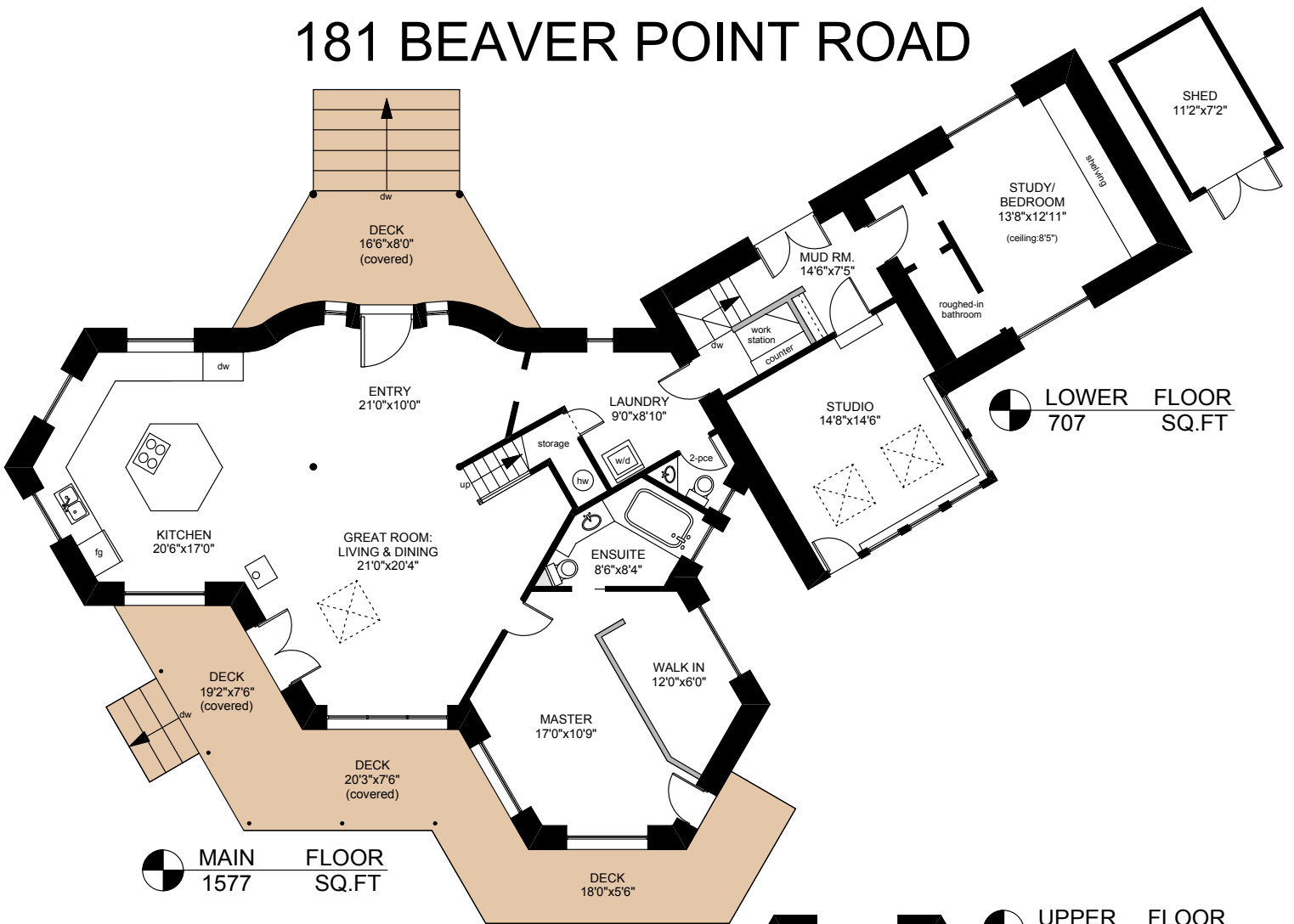


# 181 BEAVER POINT ROAD



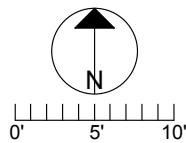
	FINISHED SQ. FT.	UNFINISHED SQ. FT.	TOTAL SQ. FT.
MAIN	1577	0	1577
UPPER	1056	0	1056
LOWER	707	0	707
<b>TOTAL</b>	<b>3340</b>	<b>0</b>	<b>3340</b>
DECKS	0	559	559
SHED	0	96	96

STUDIO BUILDING			
	FINISHED SQ. FT.	UNFINISHED SQ. FT.	TOTAL SQ. FT.
MAIN	533	47	580
UPPER	288	0	288
<b>TOTAL</b>	<b>821</b>	<b>47</b>	<b>868</b>
DECKS	0	375	375
PATIO	0	87	87
CARPORT	0	185	185
SHEDS	0	236	236

PREPARED FOR THE EXCLUSIVE USE OF  
CHRIS & DARLENE HOBBS OF  
SOTHEBY'S INTERNATIONAL REALTY CANADA

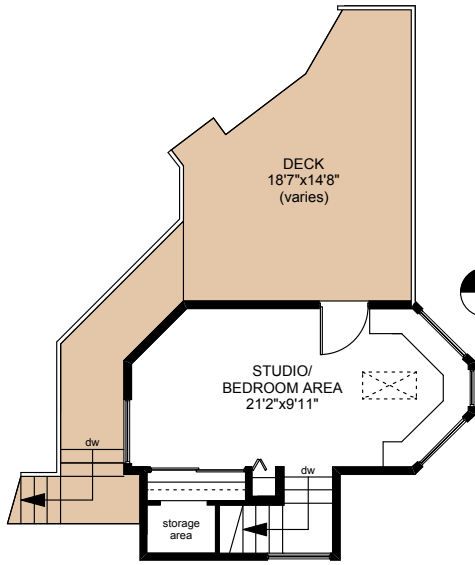
MEASURED ON: 10/06/11  
DRAWING FILE: 09791

**Tafe Measure** VICTORIA, B.C.  
Ph. 883.8894  
www.tafemeasure.com

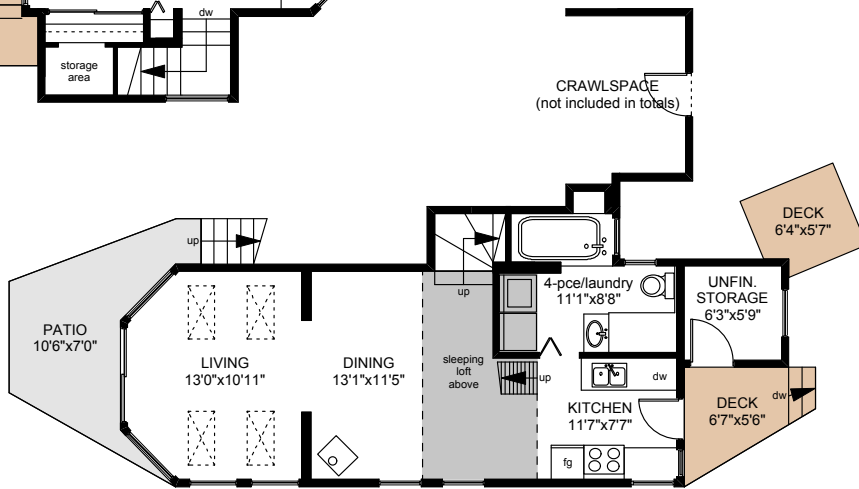


NOTE: This floor plan is provided by Chris & Darlene Hobbs of Sotheby's International Realty Canada as a convenient reference only, and is not to be relied upon as accurate. Prospective Buyers must satisfy themselves not only of the actual measurements, but also to the status of any finished space shown on this floor plan, specifically in relation to minimum ceiling height for habitable rooms required by the BC Building Code, allowable finished floor area in relation to current zoning, and determination if space was developed with necessary municipal permits.

# 181 BEAVER POINT ROAD



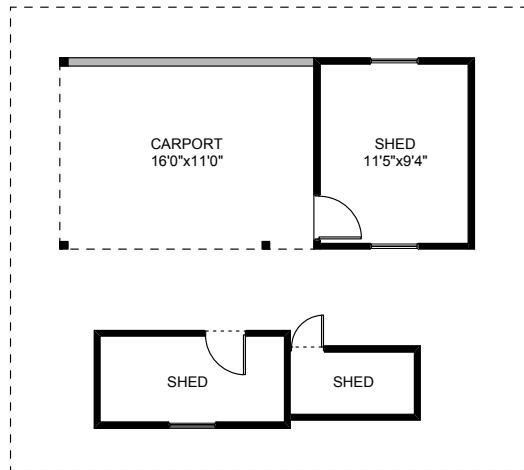
STUDIO - UPPER  
288 SQ.FT



STUDIO - MAIN  
580 SQ.FT

	FINISHED SQ. FT.	UNFINISHED SQ. FT.	TOTAL SQ. FT.
MAIN	1577	0	1577
UPPER	1056	0	1056
LOWER	707	0	707
TOTAL	3340	0	3340
DECKS	0	559	559
SHED	0	96	96

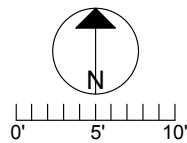
STUDIO BUILDING			
	FINISHED SQ. FT.	UNFINISHED SQ. FT.	TOTAL SQ. FT.
MAIN	533	47	580
UPPER	288	0	288
TOTAL	821	47	868
DECKS	0	375	375
PATIO	0	87	87
CARPORT	0	185	185
SHEDS	0	236	236



PREPARED FOR THE EXCLUSIVE USE OF  
CHRIS & DARLENE HOBBS OF  
SOTHEBY'S INTERNATIONAL REALTY CANADA

MEASURED ON: 10/06/11  
DRAWING FILE: 09791

**Tafe Measure** VICTORIA, B.C.  
Ph. 883.8894  
www.tafemeasure.com



NOTE: This floor plan is provided by Chris & Darlene Hobbs of Sotheby's International Realty Canada as a convenient reference only, and is not to be relied upon as accurate. Prospective Buyers must satisfy themselves not only of the actual measurements, but also to the status of any finished space shown on this floor plan, specifically in relation to minimum ceiling height for habitable rooms required by the BC Building Code, allowable finished floor area in relation to current zoning, and determination if space was developed with necessary municipal permits.